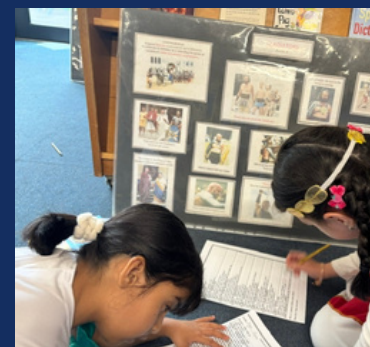




WEEKLY NEWSFLASH

YEAR 3

Year 3 have been transported back to the Roman times! We met a soldier called Sergio who told us about his life as well as the history of the Roman Empire. We took part in activities such as gladiator fighting, observed Roman artefacts, and played a Roman game. What a fun day! Sergio also left everybody a special Roman coin from thousands of years ago to take home and remember our adventures.

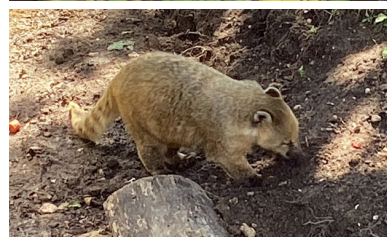


FRIDAY
12/06/2026



RECEPTION

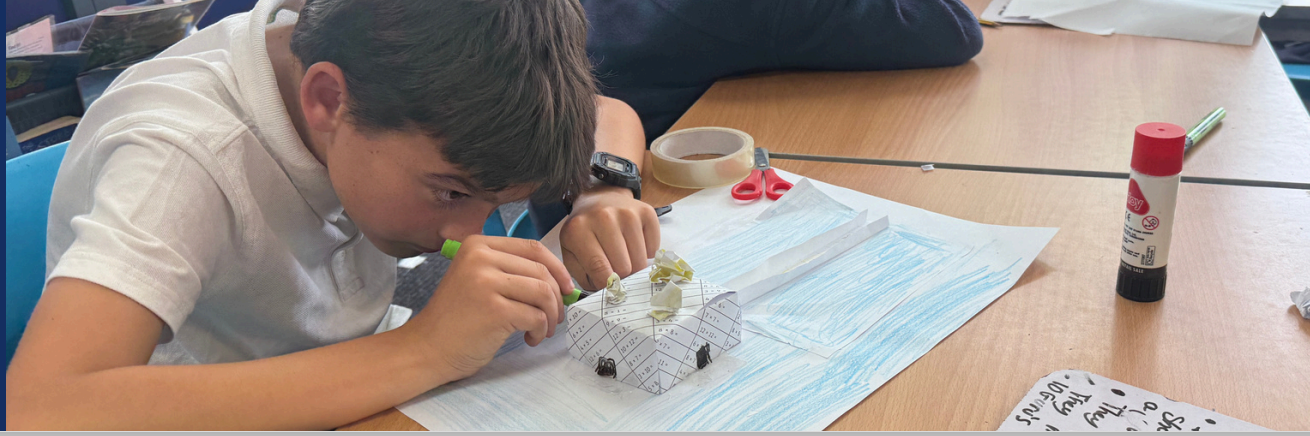
This week the children in Reception have enjoyed their first school trip to Shepreth Wildlife park. We were excited to see some of the animals from the big wide world we having been learning about in class. We visited the education centre to find out how animals use camouflage. We were impressed by the way some of the animals could hide themselves in their habitats using their markings and patterns.



Spot the Owl!

Can you spot the second owl hidden in this picture? Take a close look and see if you can find our feathered friend!

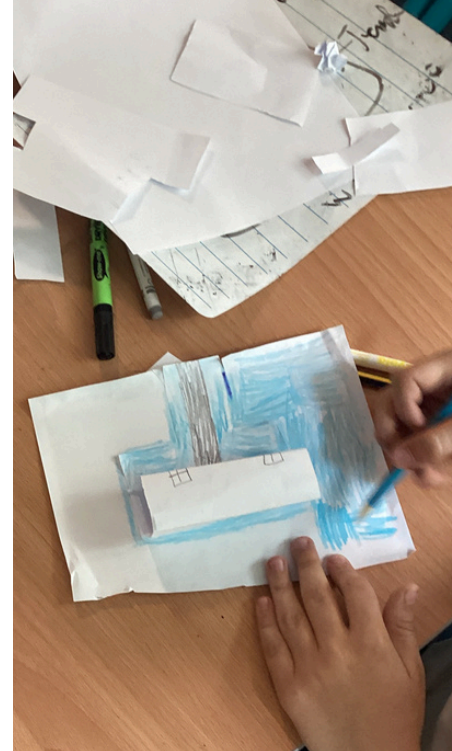




FRIDAY
12/06/2026

YEAR 5

Year 5 have started a new unit in RE on Sikhism. They explored the Harimandir Sahib (Golden Temple) using picture cards and a bird's eye view image. Afterwards, they created detailed models using craft materials, then discussed features like the four doorways and rich decoration. The session ended with an introduction to Guru Arjan, who built the temple.



DATES FOR THE DIARY

- 16th June - Saplings & Nursery - Animal Edge Farm visit to school
- 24th June - Class Photos
- 25th June - Sports Day: Y1 & Y2 - 9:15am - 11:15am
Y3 & Y4 - 1:30pm - 3pm
- 26th June - Sports Day: Nursery - 9:10am - 10:10am
Reception - 10:30am - 12pm
Y5 & Y6 - 1:30pm - 3pm
- 30th June - Year 1 British School Museum Trip
- 9th July - Transition Day (Yr 6 visit to secondary schools)
- 13th July - Year 6 Performance 2-3pm
- 14th July - Year 6 Performance 6-7pm
- 21st July - Colour Run
- 23rd July - End of Term - 2pm



This week's average attendance is 95.1%. Our average whole school attendance is currently at 94.7%
Remember - to achieve 100% attendance your child needs to be in school, every day, on time.

Follow us on Facebook and Instagram
@martinswoodprimary

